

Certificate SGSCH-COC-090149

The Organization

SCRIBA S.r.l.

Via Copernico, 26 - Z.I. I Casoni - 29027 Podenzano (PC) - Italy

has been assessed and certified as meeting the requirements of

FSC® Chain-of-Custody

The company was assessed against the following standards:
FSC-STD-40-004 Version 3.0 FSC Standard for Chain of Custody Certification – April 2017
FSC-STD-50-001 Requirements for use of the FSC trademarks by Certificate Holders

for the products detailed in the scope below

**Acquisto di carta ed etichette adesive certificati FSC (FSC Mix, FSC Recycled)
per la produzione di materiale pubblicitario e fogli illustrativi (in outsourcing
se necessario) ed etichette adesive (FSC Mix, FSC Recycled).**

**Sistema del trasferimento. Commercializzazione di imballaggi in cartone e cartone
ondulato (FSC Mix, FSC Recycled), commercializzazione di pallets FSC 100%.**

Sistema del trasferimento.

**Purchase of paper and adhesive paper (FSC Mix, FSC Recycled) for manufacturing
and sale of advertising material, leaflets (in outsourcing if needed) and adhesive labels
(FSC Mix, FSC Recycled). Transfer system.**

**Trading of cardboard packaging and corrugated paper packaging (FSC Mix,
FSC Recycled), trading of pallets FSC 100%. Transfer system.**

This certificate is valid from 27 July 2021 until 26 July 2026
and remains valid subject to satisfactory surveillance audits.

Re-certification audit due 90 days prior to expiry date.

Issue 1. Certified since July 2021

SGS Ref # IT21/0723

Authorised by

A. Vindel *P. Pisoni*

SGS Société Générale de Surveillance SA
1, place des Alpes, 1211 Geneva, Switzerland
t +41 (0)22 739 91 11 f +41 (0)22 739 98 86 www.sgs.com

The validity of this certificate shall be verified on <http://info.fsc.org/>

For the full list of product groups covered by the certificate see <http://info.fsc.org/>

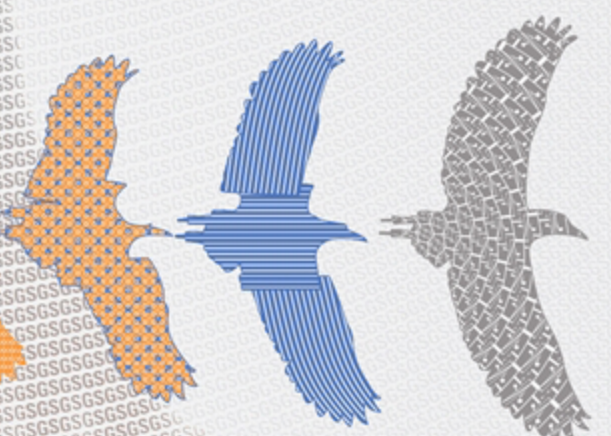
This certificate itself does not constitute evidence that a particular product supplied by the certificate holder is FSC-certified (or FSC Controlled Wood). Products offered, shipped or sold by the certificate holder can only be considered covered by the scope of this certificate when the required FSC claim is clearly stated on sales and delivery documents. The certificate remains the property of SGS. The certificates and all copies or reproductions shall be returned or destroyed if requested by SGS.

Page 1 of 1

SGS



The mark of
responsible forestry



This document is a Web version of SGS certificate for electronic use exclusively. It shall only be available by clicking on SGS Certification Mark which has been posted on Your website. It shall not be printed in anyway. This document is copyright protected. No content or appearance may be reproduced without the express written permission of SGS. Any misuse, alteration, forgery or falsification is unlawful.